

Operating instructions

Wall safes AMS

Included in delivery:

Additional operating instructions as required (depending on the lock equipment)

Double-bit key (for double-bit lock, if built in)

Change key (for Number combination lock, if built in)

Cylinder key (for locking of the boltwork cover, necessary for mounting of the alarm detectors in the door)

1 General information

1.1 Validity of this instruction

Wall safes type AMS

1.1.1 Classification of the safes

	resistance-grade according to EN 1143-1 certified by VdS, ECB-S, A2P (CNPP)	accepted by VSÖ VVO
AMS with/witout rear wall armor	grade I	class EN 1

1.2 Dissolving of the certification

After burglary attacks, fire or improper intervention in design and function, the certification will be dissolved. Particularly interventions in the locking system may be carried out only by experts authorized by the manufacturer.

1.3 Fabrication number of the safes

The fabrication number (order number) and the type name are stamped at a label at the inside of the door. The fabrication number is needed in case of further inquiries.

1.4 Installing

The wall safe has to be installed according to the installation instructions (paragraph 2).
The correct mounting is part of the insurance technical admittance.

1.5 Code Security

If your safe is equipped with a codelock, never use simple number combinations (eg. 112233, 123456), personal data (eg. birth days) or in case of electronic locks with a keyboard combinations with few different numbers (eg. 000111). To improve security change the codes regularly.

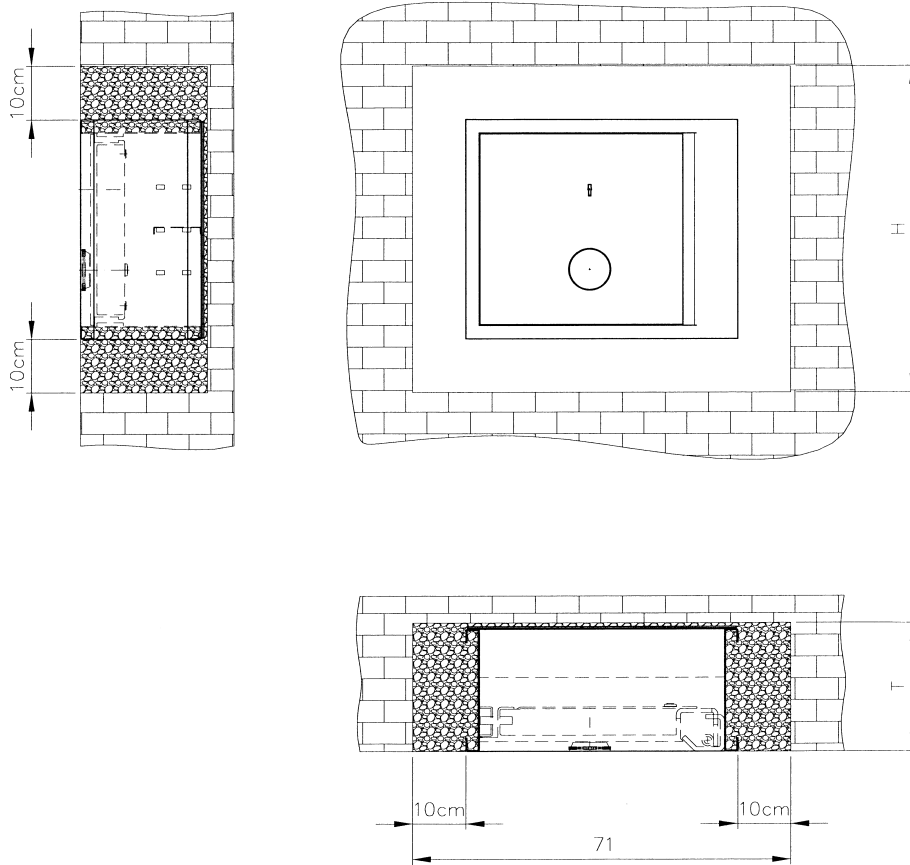
1.6 Maintenance

Except for a few exceptions nonpolluting lacquers are used. For cleaning we recommend standard alkaline household detergents. In no case use nitro or related dissolvers. In case of doubt try in a hidden area.

2 Installation of the wall safe

The wall safe has to be installed in a way, that it is surrounded by at least 10 cm of concrete all over. The demanded concrete thickness can be fallen in the depth, if the safe is equipped with a rear wall armor work-sided. The indicated wall opening depth (T) then corresponds to the minimum wall thickness, too.

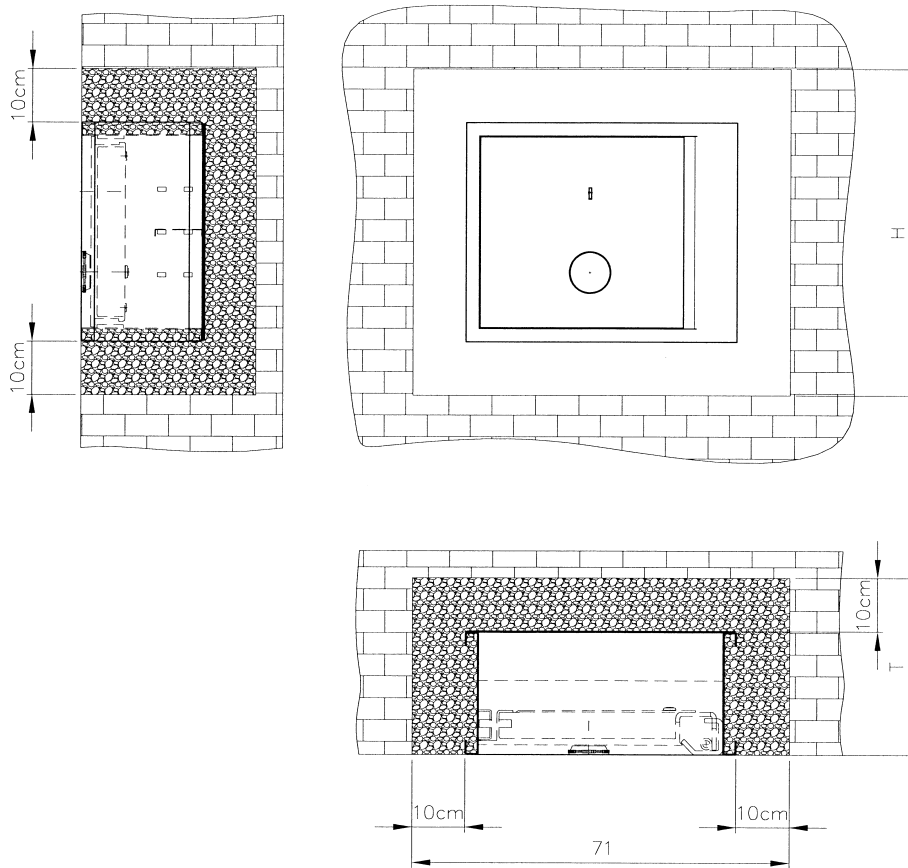
2.1 Wall safes with rear wall armor



2.1.1 For the installation of a wall safe with rear wall armor a minimum wall opening according to the following table has to be prepared:

Type	Opening H x W x D
AMS 0401 01	61 x 71 x 24 cm
AMS 0400 01	61 x 71 x 39 cm
AMS 0601 01	79 x 71 x 24 cm
AMS 0600 01	79 x 71 x 39 cm
AMS 0801 01	97 x 71 x 24 cm
AMS 0800 01	97 x 71 x 39 cm
AMS 1001 01	115 x 71 x 24 cm
AMS 1000 01	115 x 71 x 39 cm

2.2 Wall safes without rear wall armor



2.2.1 For the installation of a wall safe without rear wall armor a minimum wall opening according to the following table has to be prepared:

Type	Opening H x W x D
AMS 0401 00	61 x 71 x 33 cm
AMS 0400 00	61 x 71 x 48 cm
AMS 0601 00	79 x 71 x 33 cm
AMS 0600 00	79 x 71 x 48 cm
AMS 0801 00	97 x 71 x 33 cm
AMS 0800 00	97 x 71 x 48 cm
AMS 1001 00	115 x 71 x 33 cm
AMS 1000 00	115 x 71 x 48 cm

2.3 Fix the wall safe in the mounting opening centrally, making sure that at least 100 mm remain free between the safe walls and the masonry.

Please take care of:

- the door opening direction.
- the front must be flat with the surrounding masonry.
- the horizontal and vertical position of the wall safe – the open door has to stop in every position and does not roam at the frame when closing. The boltwork is easy to lock.
- installing and wedging the shelf into the middle position to prevent that the side walls are pushed inside by the concrete pressure.
- protecting the front with a plastic foil.

2.4 Attach formwork in a way, that the safe front and the concrete filling are completing in one level. Leave a cast opening free at the formwork top side.

2.5 Prepare concrete C30/37 (B400)

Recipe: 2 parts of washed gravel 0-12 mm.
1 part cement, e. g. CEM II 42,5R (PZ 375).
Water as required, until you have soft concrete. Concrete of this consistency is flowing weakly if it is poured.

Processing: Mix gravel and cement dryly in a cement mixer. Add water until you have got the desired consistency.
Mix about 3 minutes.

2.6 Filling

Pour concrete through the prepared cast opening. Rattle the concrete by poking and slight hammer blows against the formwork so that no cavities remain free.

Remove formwork at the earliest after 48 hours.

2.7 Clean the Safe from remaining concrete. Let the Safe dry out with open door.

Manipulation protection:

If the mounting place is an unguarded construction site, the door can be put up in 90° open door position and being kept at a safe place. Therefore the two screws on the door hinge above have to be loosened and the small metal plate (raising protection) has to be pushed down. Then raise the door for about 10 mm and pull it to the front out of the frame (manipulation protection at unguarded construction site).

Attention: the door weighs about 80 % of the safes total weight.

2.8 After drying put in the door (push the small protection plate up und screw it tightly) close it, if necessary lubricate the door hinges with a few drops of bicycle oil.

Tips:

Choose the mounting height in a way that the operations at the locking system are easily possible.

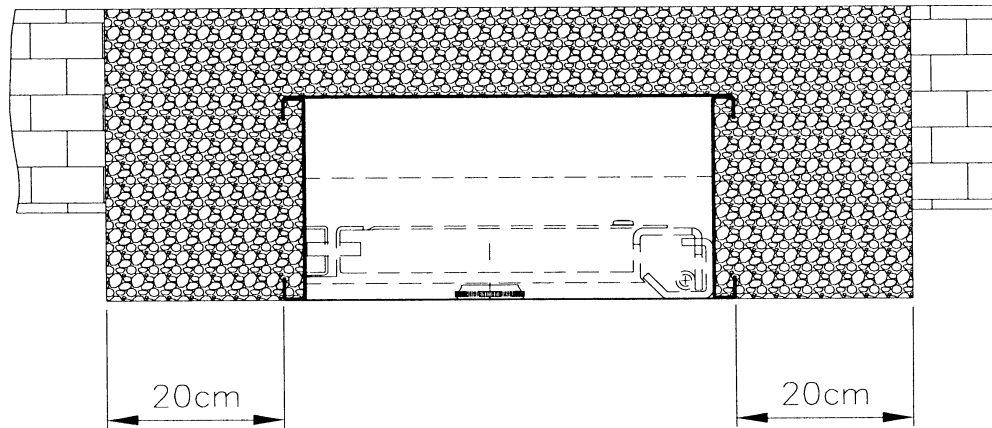
At the mounting in outer walls has to be paid attention on a sufficient insulation (e. g. 3 cm Styropor) to avoid the emergence of condensed water

Chimney walls are not suitable for the mounting.

As suitable position for the mounting of wall safes areas under stairs often offer the sufficient wall thicknesses.

Additional wall reinforcement makes sufficient space for the safe mounting.

Recommendation: at wall reinforcement let 20 cm concrete C30/37 (B400) around.



Wall safes are top heavy. The opening of a not built-in wall safe causes danger of tipping over.

3 Initial operation of the wall safe

3.1 Unlock the locks

3.1.1 Open the code locks with the factory code according to enclosed operation instructions..

3.1.2 Keylocks:

Insert the key into the keyhole with the longer key-bit down.

Turn the key clockwise until stop.

3.2 Turn the knob clockwise until stop

3.3 Open the door

3.4 Adjust the code locks to a personal code according to enclosed operating instructions

Close the boltwork while the door is open, turn the knob counterclockwise until stop.

Change the factory code to a personal code according to operating instructions – in case of electronic locks with several possible opening codes one opening code should be stored in a secure place (not in this safe), because without valid opening code nondestructive opening is not possible!

In case of electronic number combination locks with mechanical override-key the key should be stored in a secure place (not in this safe)!

Lock and unlock the number combination lock several times.

4 Unlock and open the wall safe

4.1 Unlock the locks

4.1.1 Open the code locks with the opening code according to enclosed operating instructions.

4.1.2 Keylocks:

Insert the key into the keyhole with the longer key-bit to the knob.

Turn the key clockwise until stop..

4.2 Turn the knob clockwise until stop

4.3 Open the door

In case of an open boltwork the locks cannot be locked. To remove a key, the boltwork has to be brought into locking position while the door is open.

5 Close and lock the wall safe

Initial position: Door open, boltwork open.

5.1 Close the door carefully – danger of jamming!

5.2 Turn the knob counterclockwise until stop

5.3 Lock the locks, if necessary remove the key

6 Conduct in case of key loss

In case of key loss the lock has to be opened with a spare key. Replace it as soon as possible by customer service or authorized technicians.

ATTENTION: If the safe is opened with a found or stolen key in case of burglary, the insurance company is not liable for insured loss!



Wertheim Vertriebs GmbH · Danfoss-Straße 6 · 2353 Guntramsdorf
Tel +43 (0)2236 320 350 - 0 · Fax +43 (0)2236 320 350 - 21
E-mail: office@wertheim.at · Internet: www.wertheim.at
Wertheim Service-Hotline: +43 (0)2236 320 350 - 300