

Operating instructions

Fire resistant safes AP / BP / CP

Included in delivery:

Additional operating instructions as required (depending on the lock equipment)

Double-bit key (for double-bit lock, if built in)

Change key (for Number combination lock, if built in)

Cylinder key (for locking of the boltwork cover, necessary for mounting of the alarm detectors in the door)

Supplementary sheet to the operating instructions „EMA preparation in safes LFG810020“

1 General information

1.1 Validity of this instruction:

Fire resistant safes type AP, BP, CP

1.1.1 Classification of the safes

Fire resistant safes have full burglar protection according to EN1143-1 (certified by VdS, ECB-S, A2P (CNPP)) and full tested fire protection according to EN15659 (tested by the MPA TU Braunschweig)

	resistance-grade according to EN 1143-1 certified by VdS, ECB-S, A2P (CNPP)		accepted by VSÖ VVO
AP10	grade I	LFS60P	class EN 1
BP10/41	grade II	LFS60P	class EN 2
AP15 to AP40	grade I	LFS30P	class EN 1
BP15 to BP40	grade II	LFS30P	class EN 2
CP	grade III	LFS30P	class EN 3

1.2 Dissolving of the certification

After burglary attacks, fire or improper intervention in design and function, the certification will be dissolved. Particularly interventions in the locking system may be carried out only by experts authorized by the manufacturer.

Particularly damages at the sealings affect the resistance against fire and have to be repaired only by experts authorized by the manufacturer.

1.3 Cable conduits

1.3.1 All cable pipes through the walls are sealed with insulating material from inside and additionally closed with plastic plugs from the outside.

1.3.2 Using of the cable conduits:

Remove the insulation material from the cable pipe from inside.

Push the plastic plug from inside outwards.

Thread the cable.

Paste the cable with "Ofenkitt 1000" or comparable fire resistant mastic.

1.3.3 Supplier reference:

Material

Ofenkitt 1000

Art. Nr. 0893 290 0

Supplier

Würth Handelsges.m.b.H.

Würth Straße 1, A-3071 Böheimkirchen

Telefon: +43 5 08242 0

Telefax: +43 5 08242 53333

e-mail: info@wuerth.at www.wuerth.at

1.4 Fabrication number of the safes

The fabrication number (order number) and the type name are stamped at a label at the inside of the door. The fabrication number is needed in case of further inquiries.

1.5 Transport and place of installation

Before the installation the permitted floor loading has to be checked.

The safe has to be installed and levelled, so that the door does not swing in any open position.

1.6 Floor fixing

Safes with less than 1000 kg net weight are prepared for a floor fixing and must be anchored according to paragraph 6.

1.7 Accident prevention

For opening and closing the safe door use only the proper handle (with both hands).



1.8 Environmental conditions for electronic locks

Temperature range:	0° up to +60° C
Humidity:	max. 75 % not condensing
Electromagnetic compatibility:	according to VdS 2110

Because electronic components could be damaged by electromagnetic fields, electronic welding in a radius of at least 5 meters is not permitted.

If electronic weldings are unavoidable, the electronic lock has to be deinstalled and taken away from the endangered zone by our customer service.

1.9 Code Security

If your safe is equipped with a codelock, never use simple number combinations (eg. 112233, 123456), personal data (eg. birth days) or in case of electronic locks with a keyboard combinations with few different numbers (eg. 000111). To improve security change the codes regularly.

1.10 Maintenance

Except for a few exceptions nonpolluting lacquers are used. For cleaning we recommend standard alkaline household detergents. In no case use nitro or related dissolvers. In case of doubt try in a hidden area.

1.11 Locking of the locks

The safe is locked only if all built in locks are locked actually with the door closed.

2 Initial operation

2.1 Unlock the locks

2.1.1 Open the code locks with the factory code according to enclosed operation instructions.

2.1.2 Keylocks:

Insert the key into the keyhole with the longer key-bit to the turning handle.

Turn the key clockwise until stop.

2.2 Turn the handle clockwise until stop

2.3 Open the door

2.4 Adjust the code locks to a personal code according to enclosed operating instructions

Mechanical number combination locks and electronic locks have to be adapted with open door and boltwork in locking position.

Lock and unlock the number combination lock several times.

In case of electronic locks with several possible opening codes one opening code should be stored in a secure place (not in this safe), because without valid opening code nondestructive opening is not possible!

3 Unlock and open the safe

3.1 Unlock the locks

3.1.1 Open the code locks with the opening code according to enclosed operating instructions.

3.1.2 Keylocks:

Insert the key into the keyhole with the longer key-bit to the turning handle.

Turn the key clockwise until stop.

3.2 Turn the handle clockwise until stop

3.3 Open the door

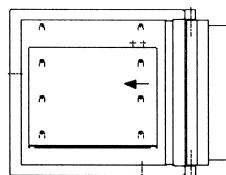
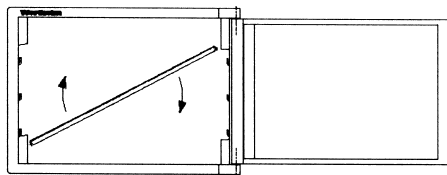
In case of an open boltwork the locks cannot be locked. To remove a key, the boltwork has to be brought into locking position while the door is open.

4 Close and lock the safe

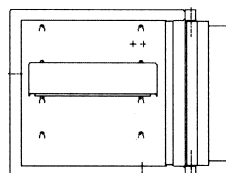
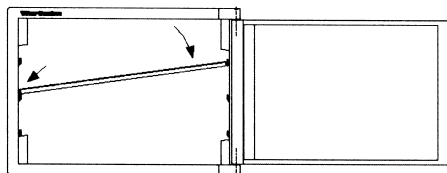
Initial position: Door open, boltwork open, locking bolt retracted.

- 4.1 Close safe door with both hands at the handle
- 4.2 Turn the handle counterclockwise until stop
- 4.3 Lock the locks, if necessary remove the key
- 4.4 For safety reasons check if the lock is locked properly
(opening test without entering code, turn the handle)

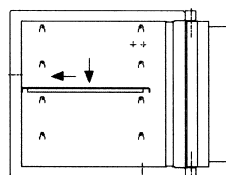
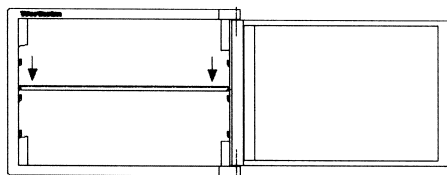
5 Shelf mounting



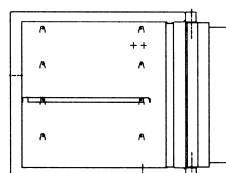
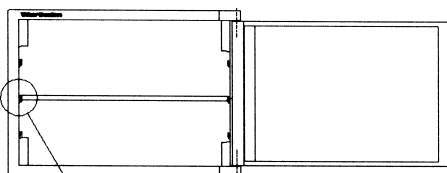
1. Place the shelf diagonally in the back of the safe.



2. Adjust the shelf so it is horizontal.



3. Push the shelf above the shelf clips on the rear wall and place it on the shelf clips.



4. Check that the shelf sits securely upon all four clips
(see detail!)

Safes with less than 1000 kg net weight must be equipped with a floor fixing according to EN 1143-1

Scheduled Anchor: 1 HILTI HST M12x185/90

suitable for floors with max. 80 mm floor construction (floor screed + insulation) to the load-bearing concrete floor.



For deeper anchoring in concrete the anchoring can be made with longer HILTI HST M12 anchors or alternative with adhesive anchors and M12 thread bar with a steel quality of 8.8 according to the processing guidelines of the manufacturer.

On other floor constructions than concrete the fixing needs to have a diameter of 12 mm and a minimum steel quality of 8.8 with a washer minimum 24 mm outer diameter and 2,5 mm thick.

Safes AP, BP and CP are equipped with a floor fixing and a rear wall fixing. For acceptance by the insurance one of these fixings is sufficient. We recommend a fixing through the floor and back wall. The scheduled anchor should be preferably used in the floor and the back wall will be anchored by means of screws and dowels. Thus, a subsequent removal is possible.

Not used drill holes for anchoring must be closed with the enclosed plug.

Mount the supplied anchor preferably in bearing concrete base, an anchor in the floor just is not enough.

1. Ensure that no electrical wiring or pipe work is in the region of drilling.
2. Place the safe in situ, ensuring it is level. Levelling is imperative for operational and safety purposes as the door should stop in every position when opened and not swing in or out due to improper levelling.
3. Use a masonry drill with 12 mm diameter masonry drill bit, place the drill bit through the hole in the safe so it touches the concrete floor below. Drilling depth must be at least 175 mm.
4. After drilling remove dust.
5. Push the anchor through the prepared hole, the threaded part must sit below the level of the internal safe floor and must not protrude out of the recessed hole (Approximately a visible 10 mm of thread).
6. Place the washer over followed by the nut. Fasten with spanner or ratchet, size 19 on supplied nut. Tighten to a torque of 60 Nm or if a torque wrench is unobtainable „Pinch tight“. To finish off, the plastic cap removed earlier to expose the bolt hole can be reinserted covering the recessed hole and anchor.

7 Connection to the alarm system

7.1 Standard Vorbereitung

Safes AP, BP and CP are prepared ex works for the installation of sensors accepted by the VdS (required consoles are mounted):

For the alarm cable to the alarm system the installation of a hanging loop is prepared.

The preparation of the alarm system is certified by VdS and documented by separate instructions (LFG810020).

7.2 Locking element installation

The required switches and small distributors (without noise detector and pull out sensor) can be pre-mounted ex works, but not wired and adjusted. They also can be ordered later.

7.3 Pull out sensor in case of floor fixing

Safes AP, BP und CP are prepared ex works for the installation of a pull out sensor. Installation precondition for the scheduled pull out sensor AM 115 is the mounting of a heavy load plug:

SLD 31 - Drill \varnothing 15 mm

The drillings can be drilled through the safe floor.

Mount the pull out sensor in the fixing hole on the door hinge side.

8 Conduct in case of key loss

In case of key loss the lock has to be opened with a spare key. Replace it as soon as possible by customer service or authorized technicians.

ATTENTION: If the safe is opened with a found or stolen key in case of burglary, the insurance company is not liable for insured loss!



Wertheim Vertriebs GmbH · Danfoss-Straße 6 · 2353 Guntramsdorf
Tel +43 (0)2236 320 350 - 0 · Fax +43 (0)2236 320 350 - 21
E-mail: office@wertheim.at · Internet: www.wertheim.at
Wertheim Service-Hotline: +43 (0)2236 320 350 - 300