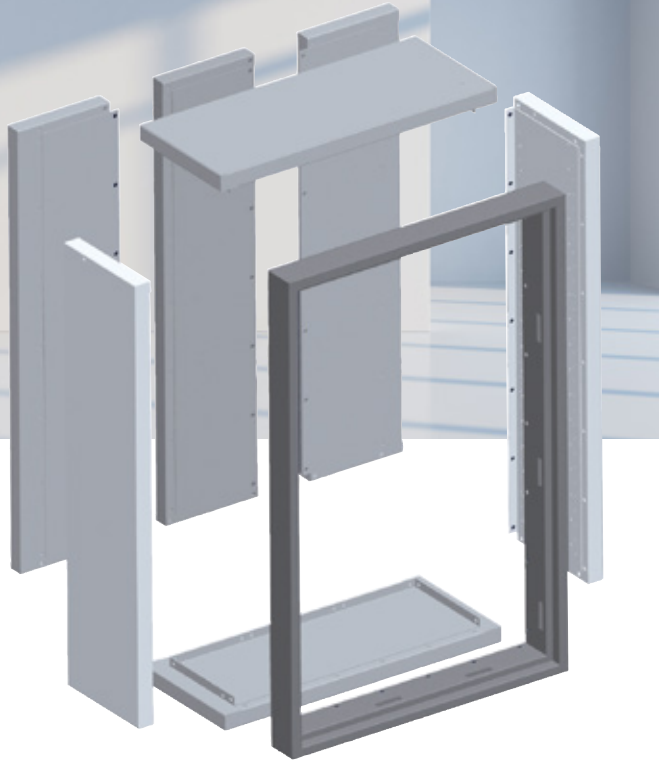


Demountable Safes



Safes in demountable design are offered in resistance grade IV(KB) and V(KB). They are used in difficult transport and installation situations. The safes are manufactured and supplied in elements. They are assembled on site by screwing them together.

Privately insurable
according to safe model

Commercial insurable
according to safe model



Product Information

All Wertheim safes in VdS grade IV(KB) and V(KB) (series DWS, DWSKB, EWS, EWSKB) from model size 1000 can be produced in a demountable version. The models in demountable design are additionally labelled with Z in the model designation.

Safes in demountable design have the same internal dimensions as the standard models. For the external dimensions, an additional 20 mm must be taken into account for the external height and width and an additional 10 mm for the external depth compared to the standard models (see table of dimensions).

Please note that dismountable safes do not offer any fire protection and can only be fitted with shelves.

Detailed information on the DWS, DWSKB, EWS and EWSKB safes can be found on the following model pages.

Model Overview

Demountable Safes

Model	Ext. dimensions h×w×d (mm)	Int. dimensions h×w×d (mm)	Volume (l)	Weight* (appr. kg)
DWS1000(KB)Z	1023 × 830 × 735	850 × 660 × 480	269	1175
DWS1200(KB)Z	1213 × 830 × 735	1040 × 660 × 480	329	1310
DWS1600(KB)Z	1558 × 830 × 735	1385 × 660 × 480	439	1600
DWS1901(KB)Z	1903 × 830 × 735	1730 × 660 × 480	548	1910
DWS1903(KB)Z	1903 × 1130 × 735	1730 × 960 × 480	797	2370
DWS1902(KB)Z	1903 × 1130 × 735	1730 × 960 × 480	797	2415
DWS1904(KB)Z	1903 × 1435 × 735	1730 × 1265 × 480	1050	2890
EWS1000(KB)Z	1023 × 830 × 735	850 × 660 × 480	269	1210
EWS1200(KB)Z	1213 × 830 × 735	1040 × 660 × 480	329	1390
EWS1600(KB)Z	1558 × 830 × 735	1385 × 660 × 480	439	1715
EWS1901(KB)Z	1903 × 830 × 735	1730 × 660 × 480	548	2035
EWS1903(KB)Z	1903 × 1130 × 735	1730 × 960 × 480	797	2530
EWS1902(KB)Z	1903 × 1130 × 735	1730 × 960 × 480	797	2580
EWS1904(KB)Z	1903 × 1435 × 735	1730 × 1265 × 480	1050	3080

In addition to the indicated outer depth of the safe, a further 60 mm must be taken into account for fittings.
*The weight specifications correspond to the net weight (without packaging) including lock.



DWS Series



Safe **DWS0850**

Colour: Grey
Hinge: right
2 x S&G key lock

- Proven Wertheim quality
- Resistance grade IV
- Certified fire protection*

Privately insurable
up to EUR 400.000

Commercial insurable
up to EUR 150.000



EN1143-1
Burglary protection



Grade IV



Grade IV + LFS30*
LFS60* (optional)



EN15659
Fire protection*



Class EN 4

*except models 0849, 1902 and 1904

Product Information

Door Hinge

DIN right – standard
optional: DIN left
models 1902 | 1904 double-doored

Door Opening Angle

180°

Body

Double-walled, reinforced, filled with armored highly resistant filler material

Door Structure

Triple-walled, reinforced, filled with armored highly resistant filler material, internal boltwork with partial drill protection, door rebate with several fire and smoke protection seals

Locking

Driven on three sides by solid steel bolts via a boltwork with a base plate, protected by a glass plate with additional emergency locking mechanism, steel bolts welded on the hinge side to grip behind

Anchoring

Prepared for floor bolting, anchoring material included with models 0849 and 0850, optional: additional holes** (position according to customer requirements)

Cable Hole

Door hinge side, ceiling and side wall
optional: additional holes** (position according to customer requirements)

IAS Connection

VdS-certified pre-fitting for installation and connection to an intruder alarm system (IAS)

Colour

Grey: RAL 7037
optional: paint finish according to RAL

Locks

Safes from grade IV must be equipped with at least 2 locks, lock combinations (locks from VdS class 2) freely selectable

Interior

Adjustable shelf
optional: additional shelf, inside locker, optional (0850-1901):
drawer, pull-out shelf

Accessories

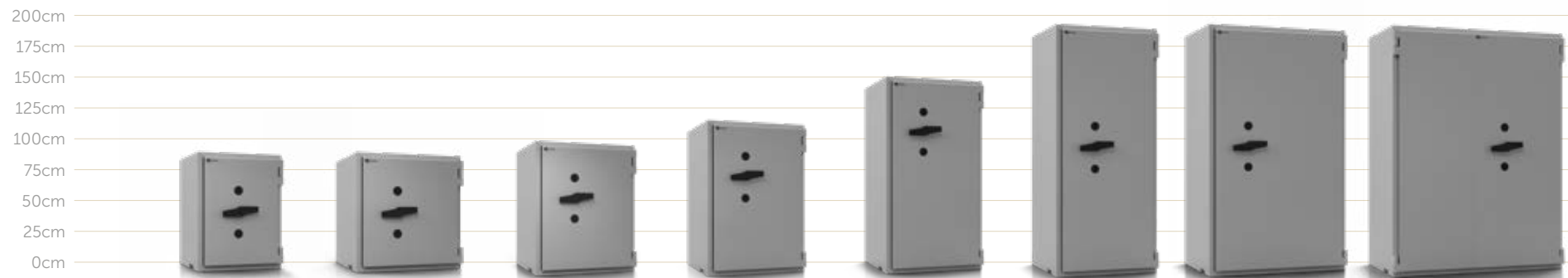
Optional: IAS switch set, interior lighting, certified fire protection LFS60*, demountable version from model 1000 – assembly on site



**In case of additional holes LFS fire protection is invalid

Model Overview

DWS Series



Model	DWS0849	DWS0850	DWS1000	DWS1200	DWS1600	DWS1901	DWS1903/1902**	DWS1904**
Ext. dimensions h×w×d (mm) incl. hinges	848×645×565	848×810×725	1003×810×725	1193×810×725	1538×810×725	1883×810×725	1883×1110×725	1883×1415×725
Int. dimensions h×w×d (mm)	695×495×320	695×660×480	850×660×480	1040×660×480	1385×660×480	1730×660×480	1730×960×480	1730×1265×480
Shelves Standard	1	1	2	2	3	4	4	4
Volume (l)	110	220	269	329	439	548	797	1050
Weight* (appr. kg)	635	875	1030	1150	1405	1680	2090/2130	2550

In addition to the indicated outer depth of the safe, a further 60 mm must be taken into account for fittings.
 *The weight specifications correspond to the net weight (without packaging) including lock and the specified shelves.
 **Models 1902 and 1904 in double-doored design

DWSKB Series



Safe **DWS1200KB**

Colour: Grey
Hinge: right
2 x S&G key lock

- Proven Wertheim quality
- Resistance grade IVKB
- Certified fire protection*
- Core drill protection

Privately insurable
by arrangement

Commercial insurable
up to EUR 250.000



EN1143-1
Burglary protection



Grade IVKB



Grade IVKB + LFS30*
LFS60* (optional)



EN15659
Fire protection*



Class EN 5

*except models 0849KB, 1902KB and 1904KB
KB = core drill protection

Product Information

Door Hinge

DIN right - standard
optional: DIN left
models 1902KB | 1904KB double-doored

Door Opening Angle

180°

Body

Double-walled, reinforced, with core drill protection, filled with armored highly resistant filler material

Door Structure

Triple-walled, reinforced, with core drill protection, filled with armored highly resistant filler material, internal boltwork with partial drill protection, door rebate with several fire and smoke protection seals

Locking

Driven on three sides by solid steel bolts via a boltwork with a base plate, protected by a glass plate with additional emergency locking mechanism, steel bolts welded on the hinge side to grip behind

Anchoring

Prepared for floor bolting, anchoring material included with models 0849KB and 0850KB, optional: additional holes** (position according to customer requirements)

Cable Hole

Door hinge side, ceiling and side wall
optional: additional holes** (position according to customer requirements)

IAS Connection

VdS-certified pre-fitting for installation and connection to an intruder alarm system (IAS)

Colour

Grey: RAL 7037
optional: paint finish according to RAL

Locks

Safes from grade IV must be equipped with at least 2 locks, lock combinations (locks from VdS class 2) freely selectable

Interior

Adjustable shelf
optional: additional shelf, inside locker, optional (0850KB-1901KB):
drawer, pull-out shelf

Accessories

Optional: IAS switch set, interior lighting, certified fire protection LFS60*,
dismountable version from model 1000KB – assembly on site



**In case of additional holes LFS fire protection is invalid

Model Overview

DWSKB Series



Model	DWS0849KB	DWS0850KB	DWS1000KB	DWS1200KB	DWS1600KB	DWS1901KB	DWS1903KB/1902KB**	DWS1904KB**
Ext. dimensions h×w×d (mm) incl. hinges	848×645×565	848×810×725	1003×810×725	1193×810×725	1538×810×725	1883×810×725	1883×1110×725	1883×1415×725
Int. dimensions h×w×d (mm)	695×495×320	695×660×480	850×660×480	1040×660×480	1385×660×480	1730×660×480	1730×960×480	1730×1265×480
Shelves Standard	1	1	2	2	3	4	4	4
Volume (l)	110	220	269	329	439	548	797	1050
Weight* (appr. kg)	635	875	1030	1150	1405	1680	2090/2130	2550

In addition to the indicated outer depth of the safe, a further 60 mm must be taken into account for fittings.

*The weight specifications correspond to the net weight (without packaging) including lock and the specified shelves.

**Models 1902KB and 1904KB in double-doored design

EWS Series



Safe **EWS1000**
 Colour: Grey
 Hinge: right
 2 x key lock S&G

- Proven Wertheim quality
- Resistance grade V
- Certified fire protection*

Privately insurable
 by arrangement

Commercial insurable
 up to EUR 250.000



EN1143-1
 Burglary protection



Grade V



Grade V + LFS30*
 LFS60* (optional)



EN15659
 Fire protection*



Class EN 5

*except models 0849, 1902 and 1904

Product Information

Door Hinge

DIN right - standard
 optional: DIN left
 models 1902 | 1904 double-doored

Door Opening Angle

180°

Body

Double-walled, reinforced, filled with armored highly resistant filler material

Door Structure

Triple-walled, reinforced, filled with armored highly resistant filler material, internal boltwork with partial drill protection, door rebate with several fire and smoke protection seals

Locking

Driven on three sides by solid steel bolts via a boltwork with a base plate, protected by a glass plate with additional emergency locking mechanism, steel bolts welded on the hinge side to grip behind

Anchoring

Prepared for floor bolting, anchoring material included with models 0849 and 0850, optional: additional holes** (position according to customer requirements)

Cable Hole

Door hinge side, ceiling and side wall
 optional: additional holes** (position according to customer requirements)

IAS Connection

VdS-certified pre-fitting for installation and connection to an intruder alarm system (IAS)

Colour

Grey: RAL 7037
 optional: paint finish according to RAL

Locks

Safes from grade IV must be equipped with at least 2 locks, lock combinations (locks from VdS class 2) freely selectable

Interior

Adjustable shelf
 optional: additional shelf, inside locker, optional (0850-1901): drawer, pull-out shelf

Accessories

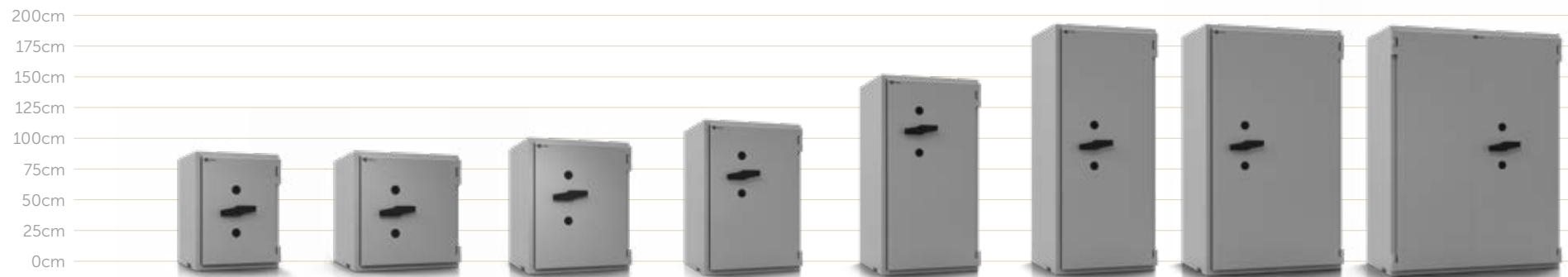
Optional: IAS switch set, interior lighting, certified fire protection LFS60*, demountable version from model 1000 – assembly on site



**In case of additional holes LFS fire protection is invalid

Model Overview

EWS Series



Model	EWS0849	EWS0850	EWS1000	EWS1200	EWS1600	EWS1901	EWS1903/1902**	EWS1904**
Ext. dimensions h×w×d (mm) incl. hinges	848×645×565	848×810×725	1003×810×725	1193×810×725	1538×810×725	1883×810×725	1883×1110×725	1883×1415×725
Int. dimensions h×w×d (mm)	695×495×320	695×660×480	850×660×480	1040×660×480	1385×660×480	1730×660×480	1730×960×480	1730×1265×480
Shelves Standard	1	1	2	2	3	4	4	4
Volume (l)	110	220	269	329	439	548	797	1050
Weight* (appr. kg)	665	935	1060	1220	1505	1790	2230/2270	2720

In addition to the indicated outer depth of the safe, a further 60 mm must be taken into account for fittings.

*The weight specifications correspond to the net weight (without packaging) including lock and the specified shelves.

**Models 1902 and 1904 in double-doored design

EWSKB-Serie



Safe **EWS1600KB**

Colour: Grey
Hinge: right
2 x key lock S&G

- Proven Wertheim quality
- Resistance grade VKB
- Certified fire protection*
- Core drill protection

Privately insurable
by arrangement

Commercial insurable
up to EUR 375.000



EN1143-1
Burglary protection



Grade VKB



Grade VKB + LFS30*
LFS60* (optional)



EN15659
Fire protection*



Class EN 6

*except models 0849KB, 1902KB and 1904KB
KB = core drill protection

Product Information

Door Hinge

DIN right – standard
optional: DIN left
models 1902KB | 1904KB double-doored

Door Opening Angle

180°

Body

Double-walled, reinforced, with core drill protection, filled with armored highly resistant filler material

Door Structure

Triple-walled, reinforced, with core drill protection, filled with armored highly resistant filler material, internal boltwork with partial drill protection, door rebate with several fire and smoke protection seals

Locking

Driven on three sides by solid steel bolts via a boltwork with a base plate, protected by a glass plate with additional emergency locking mechanism, steel bolts welded on the hinge side to grip behind

Anchoring

Prepared for floor bolting, anchoring material included with models 0849KB and 0850KB, optional: additional holes** (position according to customer requirements)

Cable Hole

Door hinge side, ceiling and side wall
optional: additional holes** (position according to customer requirements)

IAS Connection

VdS-certified pre-fitting for installation and connection to an intruder alarm system (IAS)

Colour

Grey: RAL 7037
optional: paint finish according to RAL

Locks

Safes from grade IV must be equipped with at least 2 locks, lock combinations (locks from VdS class 2) freely selectable

Interior

Adjustable shelf
optional: additional shelf, inside locker, optional (0850KB-1901KB): drawer, pull-out shelf

Accessories

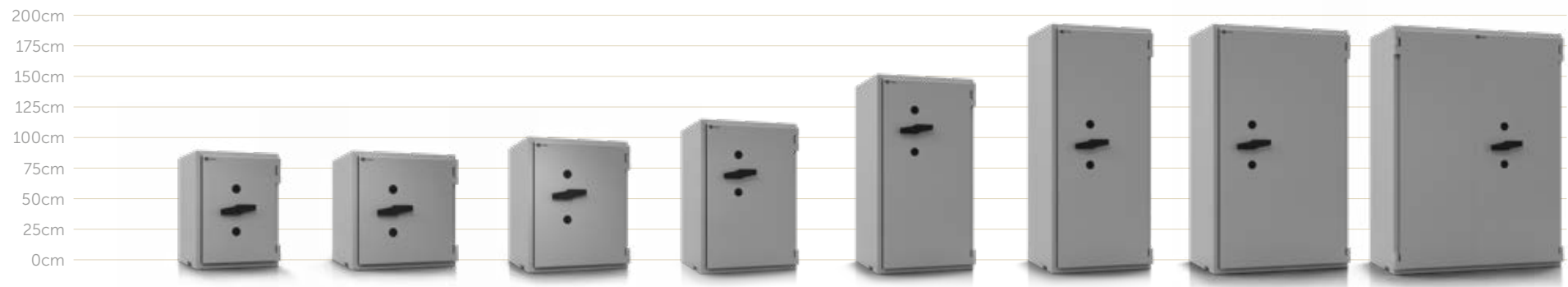
Optional: IAS switch set, interior lighting, certified fire protection LFS60*, demountable version from model 1000KB – assembly on site



**In case of additional holes LFS fire protection is invalid

Model Overview

EWSKB Series



Model	EWS0849KB	EWS0850KB	EWS1000KB	EWS1200KB	EWS1600KB	EWS1901KB	EWS1903KB/1902KB**	EWS1904KB**
Ext. dimensions h×w×d (mm) incl. hinges	848×645×565	848×810×725	1003×810×725	1193×810×725	1538×810×725	1883×810×725	1883×1110×725	1883×1415×725
Int. dimensions h×w×d (mm)	695×495×320	695×660×480	850×660×480	1040×660×480	1385×660×480	1730×660×480	1730×960×480	1730×1265×480
Shelves Standard	1	1	2	2	3	4	4	4
Volume (l)	110	220	269	329	439	548	797	1050
Weight* (appr. kg)	665	935	1060	1220	1505	1790	2230/2270	2720

In addition to the indicated outer depth of the safe, a further 60 mm must be taken into account for fittings.

*The weight specifications correspond to the net weight (without packaging) including lock and the specified shelves.

**Models 1902KB and 1904KB in double-doored design